



Geography

Klinck

Binning

- LEGEND -

EXIT



FIRE HYDRANT

Fire Hall

Jack Bell

WEST MALL

Ponderosa B

Ponderosa A

Ponderosa C

FIRE ANNUNCIATOR
PANEL

PREDESIGNATED
MEETING AREA

First Nations
Long House

Ponderosa G

Ponderosa Commons
Cedar/Oak House

Ponderosa E

2034

Ponderosa F

2008

FIRE HYDRANT

PREDESIGNATED
MEETING AREA

FIRE HYDRANT

LOWER MALL

FOR EMERGENCIES CALL 911

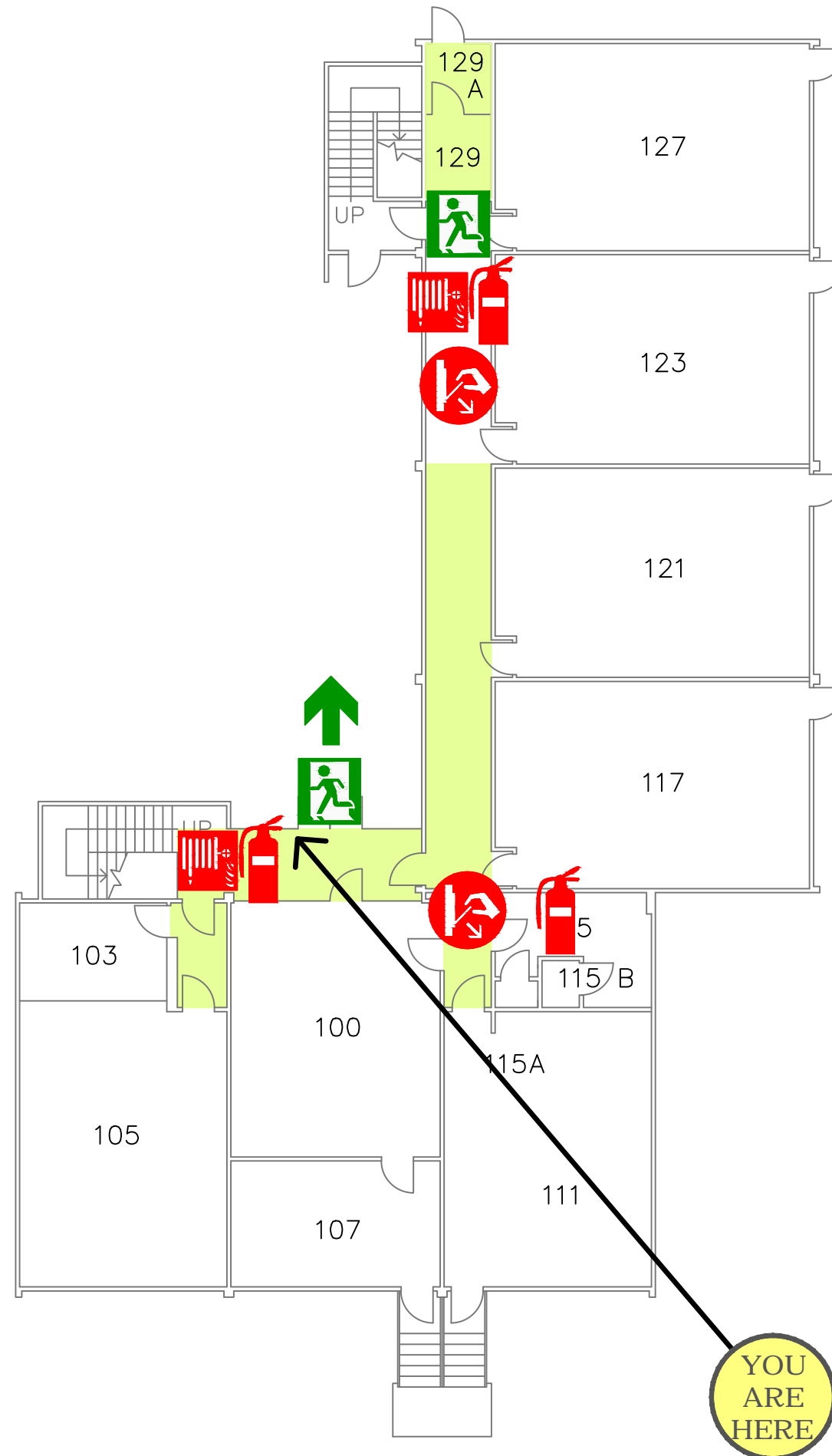
Ponderosa Office E, F
2008 / 2034 LOWER MALL, VANCOUVER, B.C.

SITE MAP - POINT GREY CAMPUS





PREDESIGNATED
MEETING AREA



MAIN FLOOR PLAN
N.T.S.

EMERGENCY INSTRUCTIONS

If you discover a fire or explosion in the building:

- 1 Immediately activate the closest fire alarm/pull station.
- 2 Call 911.
- 3 Give the address and the nearest intersection (2034 LOWER MALL at the intersection of Lower Mall & University Boulevard)
- 4 Provide information about the emergency: Where is the fire? (Main floor, room # ____), How fast the fire is spreading? Are there people trapped?
- 5 If it is safe, control the fire.
- 6 Isolate the fire by closing doors behind you. Do not lock the doors.
- 7 Leave by the nearest safe exit.
- 8 Walk. Do not run. Shut doors behind you. On leaving the building move well away. Do not block road access.
- 9 Do not go back in the building for any reason until the all-clear has been announced by emergency personnel.
- 10 If you hear the fire alarm ringing - Follow steps 6 through 8 above.

**In the event of a fire
DO NOT USE ELEVATOR(s).**

(See the map to your left for the location of all fire extinguishers, fire alarm/pull stations, safe exits and areas of refuge)

FOR EMERGENCIES CALL 911

— LEGEND —



EXIT



PULL STATION/
FIRE ALARM



FIRE
EXTINGUISHER



FIRE HOSE
CABINET



EMERGENCY INSTRUCTIONS

If you discover a fire or explosion in the building:

- 1 Immediately activate the closest fire alarm/pull station.
- 2 Call 911.
- 3 Give the address and the nearest intersection (2034 LOWER MALL at the intersection of Lower Mall & University Boulevard)
- 4 Provide information about the emergency: Where is the fire? (Main floor, room # ____), How fast the fire is spreading? Are there people trapped?
- 5 If it is safe, control the fire.
- 6 Isolate the fire by closing doors behind you. Do not lock the doors.
- 7 Leave by the nearest safe exit.
- 8 Walk. Do not run. Shut doors behind you. On leaving the building move well away. Do not block road access.
- 9 Do not go back in the building for any reason until the all-clear has been announced by emergency personnel.
- 10 If you hear the fire alarm ringing - Follow steps 6 through 8 above.

**In the event of a fire
DO NOT USE ELEVATOR(s).**

(See the map to your left for the location of all fire extinguishers, fire alarm/pull stations, safe exits and areas of refuge)

FOR EMERGENCIES CALL 911

— LEGEND —



EXIT



PULL STATION/
FIRE ALARM

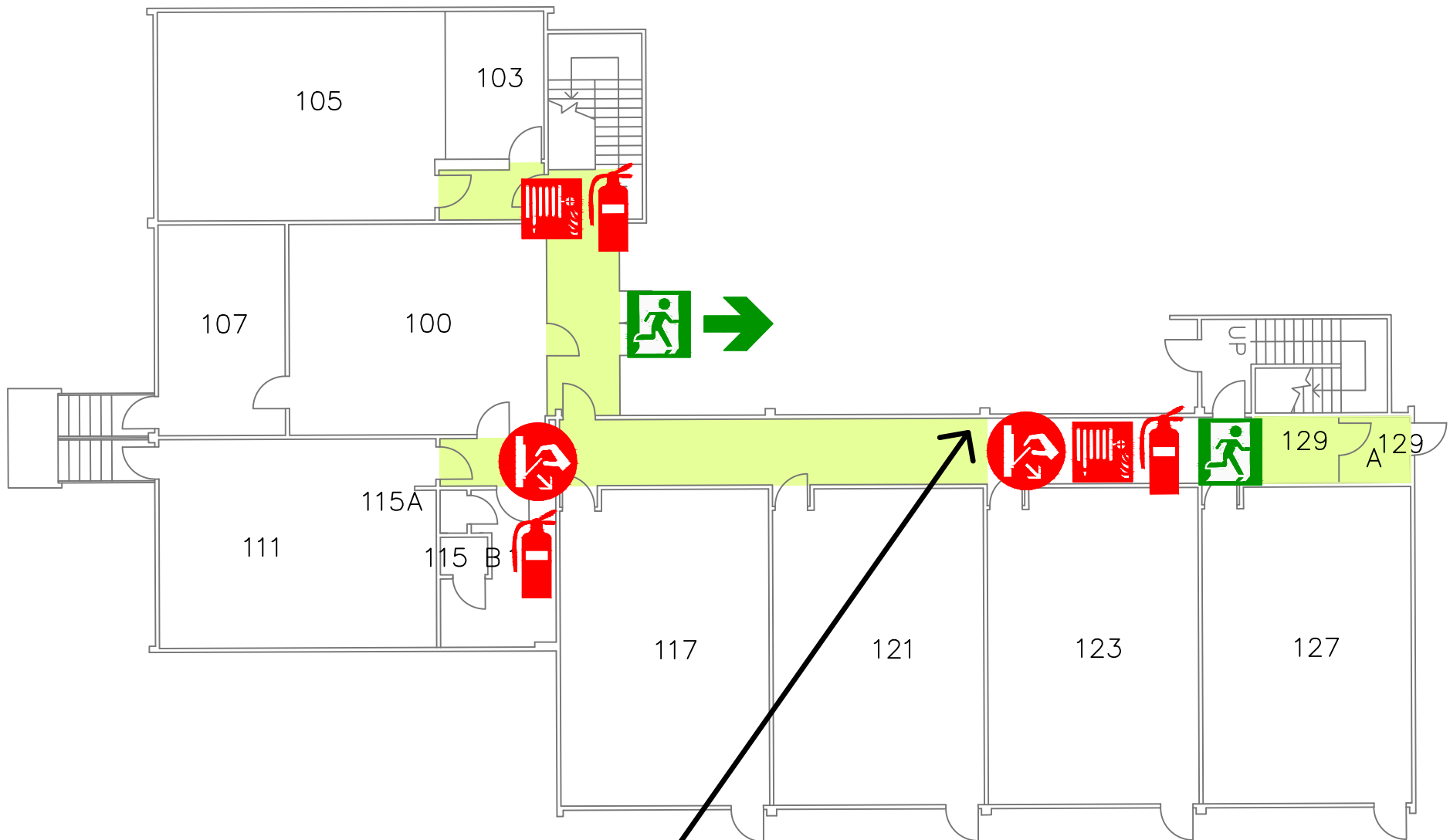


FIRE
EXTINGUISHER



FIRE HOSE
CABINET

LOWER MALL

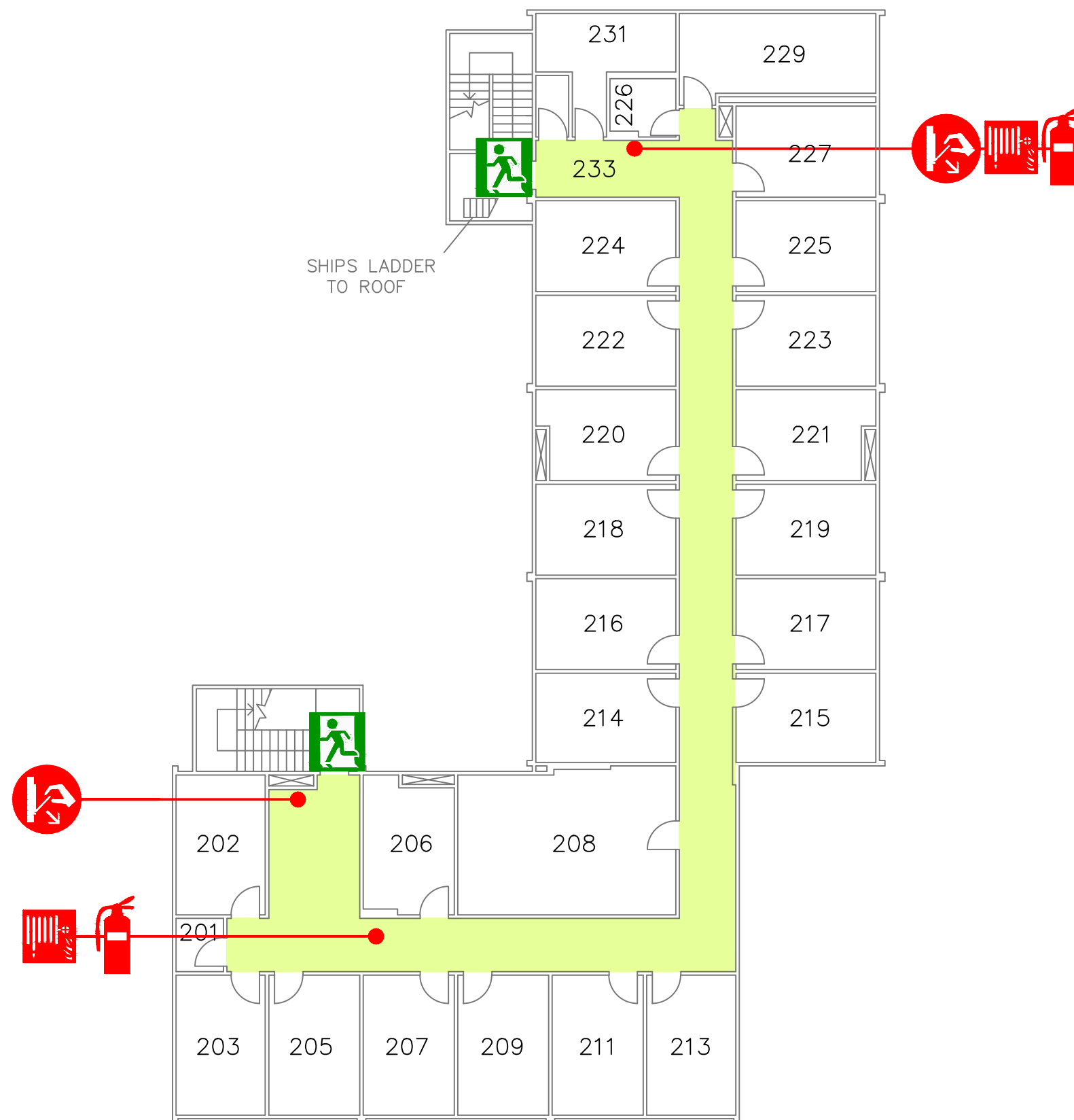


YOU
ARE
HERE

MAIN FLOOR PLAN
N.T.S.



PREDESIGNATED
MEETING AREA



SECOND FLOOR PLAN
N.T.S.

LOWER MALL

EMERGENCY INSTRUCTIONS

If you discover a fire or explosion in the building:

- 1 Immediately activate the closest fire alarm/pull station.
- 2 Call 911.
- 3 Give the address and the nearest intersection (2034 LOWER MALL at the intersection of Lower Mall & University Boulevard)
- 4 Provide information about the emergency: Where is the fire? (Second floor, room #____), How fast the fire is spreading? Are there people trapped?
- 5 If it is safe, control the fire.
- 6 Isolate the fire by closing doors behind you. Do not lock the doors.
- 7 Leave by the nearest safe exit.
- 8 Walk. Do not run. Shut doors behind you. On leaving the building move well away. Do not block road access.
- 9 Do not go back in the building for any reason until the all-clear has been announced by emergency personnel.
- 10 If you hear the fire alarm ringing - Follow steps 6 through 8 above.

**In the event of a fire
DO NOT USE ELEVATOR(s).**

(See the map to your left for the location of all fire extinguishers, fire alarm/pull stations, safe exits and areas of refuge)

FOR EMERGENCIES CALL 911

— LEGEND —



EXIT



PULL STATION/
FIRE ALARM



FIRE
EXTINGUISHER



FIRE HOSE
CABINET