

2212 Main Mall
Vancouver, BC

Lower Floor

INSTRUCTIONS TO OCCUPANTS

IF YOU DISCOVER A FIRE:

- Leave the fire area.
- **IMMEDIATELY** sound the fire alarm by activating the nearest red alarm pull station.
- Call the Fire Department. **Dial 911.** Tell them you are reporting a fire at:

2212 Main Mall, Vancouver, BC

- At your discretion attempt to control the fire with available fire equipment.
- Close doors behind you and leave the building by the nearest safe exit.

DO NOT USE THE ELEVATORS

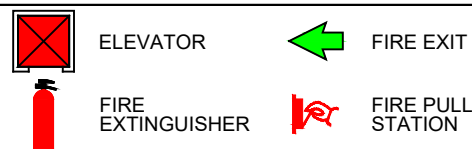
WHEN YOU HEAR THE ALARM:

- Leave the building immediately by the nearest safe exit.
- Close doors behind you.
- **REMAIN CALM.**
- When you have reached the outside, move away from the building.
- Call the Fire Department. **Dial 911.** Tell them you are reporting a fire at:

2212 Main Mall, Vancouver, BC

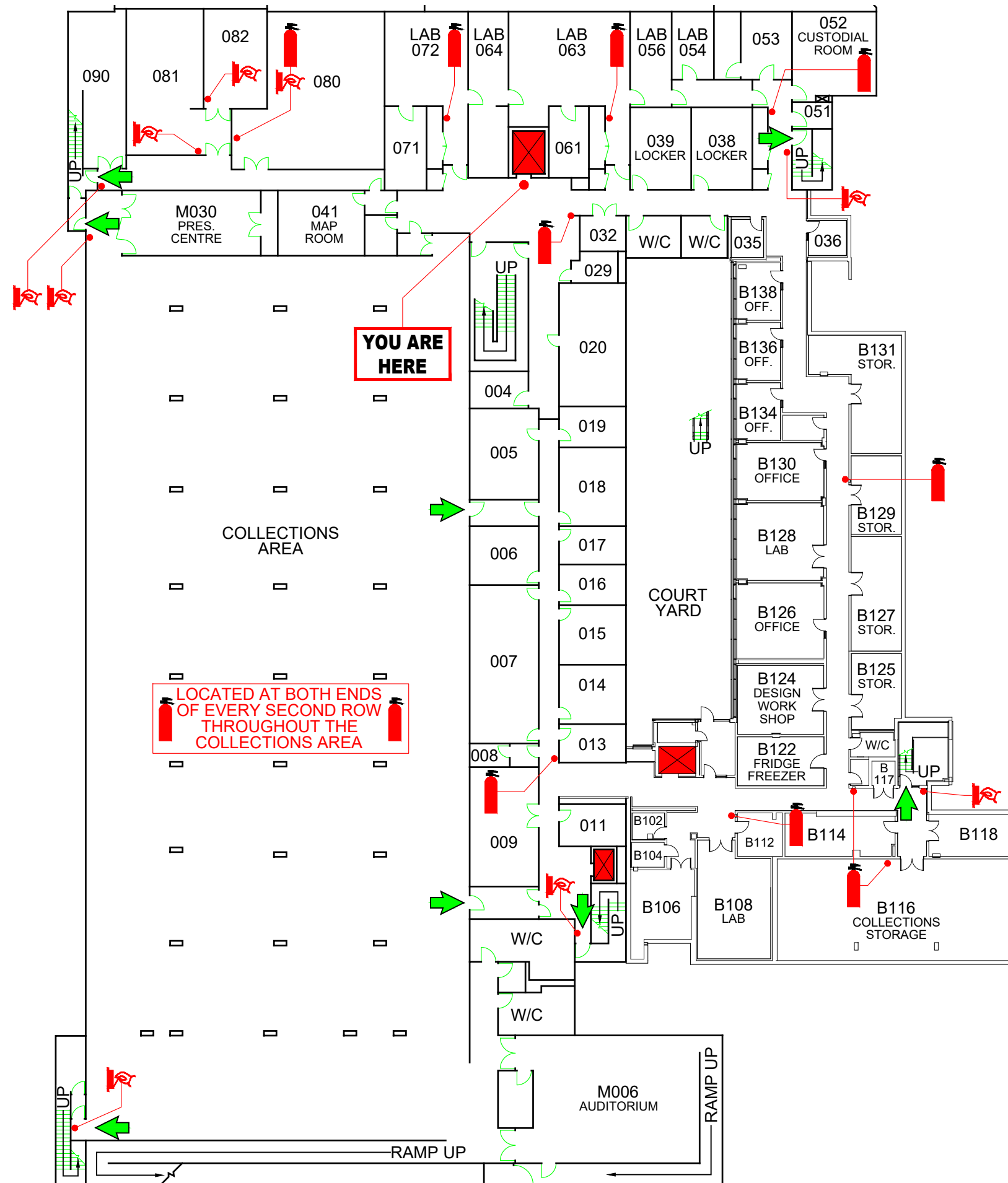
- Go to the designated assembly area.
- **DO NOT GO BACK INTO THE BUILDING FOR ANY REASON.** The Fire Department will advise when it is safe to do so.

LEGEND



THE DESIGNATED ASSEMBLY AREA FOR THIS BUILDING IS:

**West of the building,
adjacent to Main Mall.**



**2212 Main Mall
Vancouver, BC**

Lower Floor

INSTRUCTIONS TO OCCUPANTS

IF YOU DISCOVER A FIRE:

- Leave the fire area.
- **IMMEDIATELY** sound the fire alarm by activating the nearest red alarm pull station.
- Call the Fire Department. **Dial 911.** Tell them you are reporting a fire at:

2212 Main Mall, Vancouver, BC

- At your discretion attempt to control the fire with available fire equipment.
- Close doors behind you and leave the building by the nearest safe exit.

DO NOT USE THE ELEVATORS

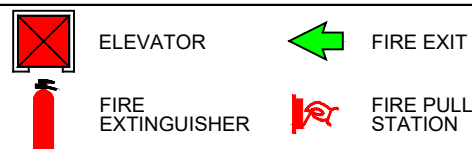
WHEN YOU HEAR THE ALARM:

- Leave the building immediately by the nearest safe exit.
- Close doors behind you.
- **REMAIN CALM.**
- When you have reached the outside, move away from the building.
- Call the Fire Department. **Dial 911.** Tell them you are reporting a fire at:

2212 Main Mall, Vancouver, BC

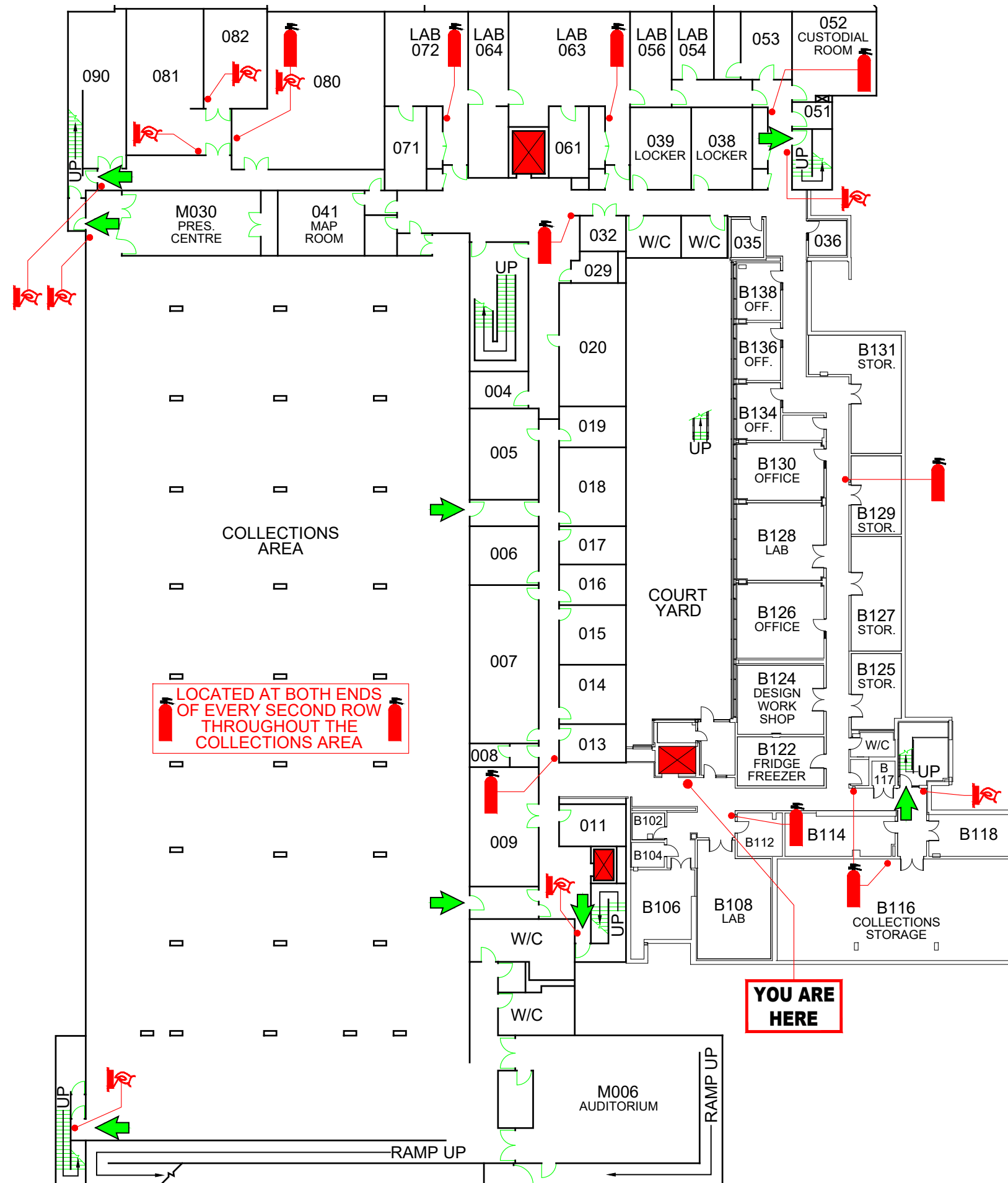
- Go to the designated assembly area.
- **DO NOT GO BACK INTO THE BUILDING FOR ANY REASON.** The Fire Department will advise when it is safe to do so.

LEGEND



THE DESIGNATED ASSEMBLY AREA FOR THIS BUILDING IS:

**West of the building,
adjacent to Main Mall.**



2212 Main Mall
Vancouver, BC

First Floor

INSTRUCTIONS TO OCCUPANTS

IF YOU DISCOVER A FIRE:

- Leave the fire area.
- **IMMEDIATELY** sound the fire alarm by activating the nearest red alarm pull station.
- Call the Fire Department. **Dial 911.** Tell them you are reporting a fire at:

2212 Main Mall, Vancouver, BC

- At your discretion attempt to control the fire with available fire equipment.
- Close doors behind you and leave the building by the nearest safe exit.

DO NOT USE THE ELEVATORS

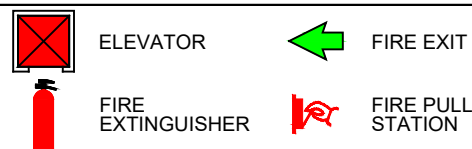
WHEN YOU HEAR THE ALARM:

- Leave the building immediately by the nearest safe exit.
- Close doors behind you.
- **REMAIN CALM.**
- When you have reached the outside, move away from the building.
- Call the Fire Department. **Dial 911.** Tell them you are reporting a fire at:

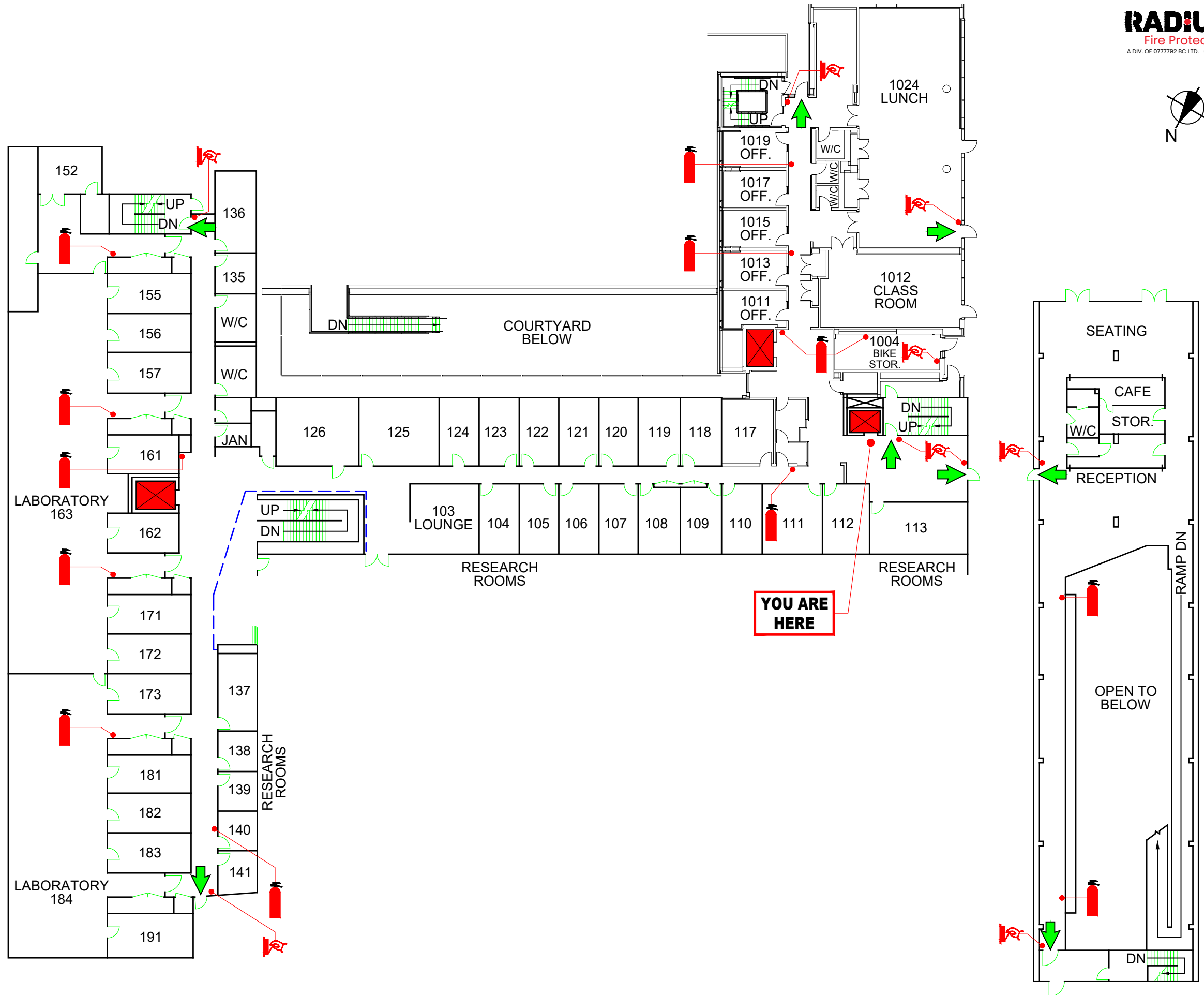
2212 Main Mall, Vancouver, BC

- Go to the designated assembly area.
- **DO NOT GO BACK INTO THE BUILDING FOR ANY REASON.** The Fire Department will advise when it is safe to do so.

LEGEND



THE DESIGNATED ASSEMBLY AREA FOR THIS BUILDING IS:
West of the building, adjacent to Main Mall.



**2212 Main Mall
Vancouver, BC**

First Floor

INSTRUCTIONS TO OCCUPANTS

IF YOU DISCOVER A FIRE:

- Leave the fire area.
- **IMMEDIATELY** sound the fire alarm by activating the nearest red alarm pull station.
- Call the Fire Department. **Dial 911.** Tell them you are reporting a fire at:

2212 Main Mall, Vancouver, BC

- At your discretion attempt to control the fire with available fire equipment.
- Close doors behind you and leave the building by the nearest safe exit.

DO NOT USE THE ELEVATORS

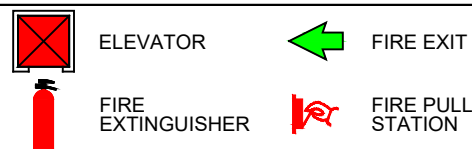
WHEN YOU HEAR THE ALARM:

- Leave the building immediately by the nearest safe exit.
- Close doors behind you.
- **REMAIN CALM.**
- When you have reached the outside, move away from the building.
- Call the Fire Department. **Dial 911.** Tell them you are reporting a fire at:

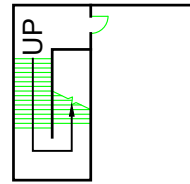
2212 Main Mall, Vancouver, BC

- Go to the designated assembly area.
- **DO NOT GO BACK INTO THE BUILDING FOR ANY REASON.** The Fire Department will advise when it is safe to do so.

LEGEND



THE DESIGNATED ASSEMBLY AREA FOR THIS BUILDING IS:
*West of the building,
adjacent to Main Mall.*



**2212 Main Mall
Vancouver, BC
Second Floor**

INSTRUCTIONS TO OCCUPANTS

IF YOU DISCOVER A FIRE:

- Leave the fire area.
- **IMMEDIATELY** sound the fire alarm by activating the nearest red alarm pull station.
- Call the Fire Department. **Dial 911.** Tell them you are reporting a fire at:

2212 Main Mall, Vancouver, BC

- At your discretion attempt to control the fire with available fire equipment.
- Close doors behind you and leave the building by the nearest safe exit.

DO NOT USE THE ELEVATORS

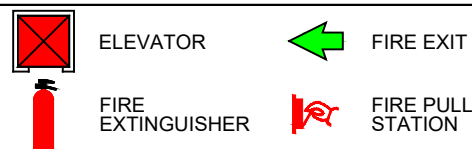
WHEN YOU HEAR THE ALARM:

- Leave the building immediately by the nearest safe exit.
- Close doors behind you.
- **REMAIN CALM.**
- When you have reached the outside, move away from the building.
- Call the Fire Department. **Dial 911.** Tell them you are reporting a fire at:

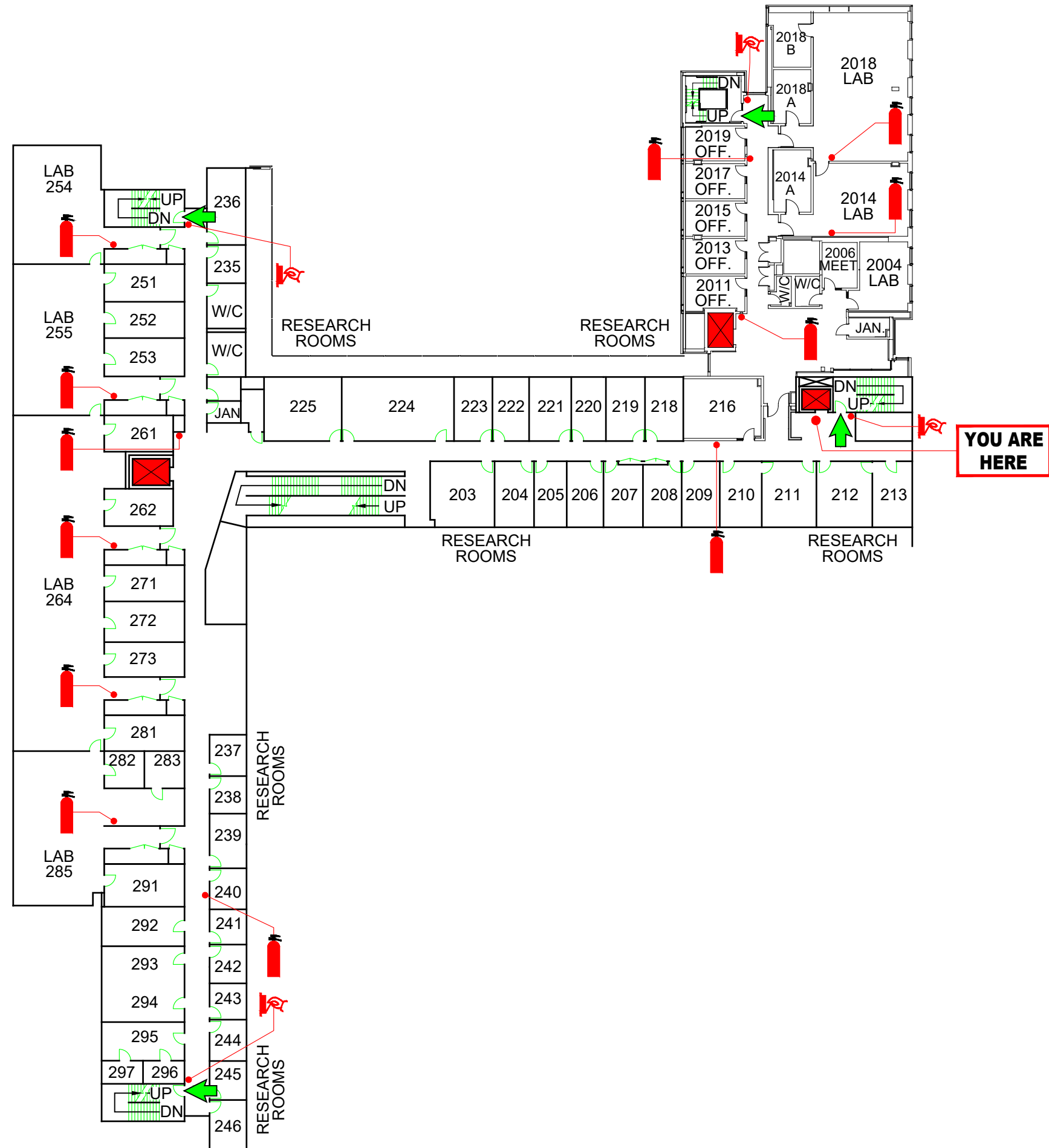
2212 Main Mall, Vancouver, BC

- Go to the designated assembly area.
- **DO NOT GO BACK INTO THE BUILDING FOR ANY REASON.** The Fire Department will advise when it is safe to do so.

LEGEND



THE DESIGNATED ASSEMBLY AREA FOR THIS BUILDING IS:
*West of the building,
adjacent to Main Mall.*



**2212 Main Mall
Vancouver, BC**
Second Floor

INSTRUCTIONS TO OCCUPANTS

IF YOU DISCOVER A FIRE:

- Leave the fire area.
- **IMMEDIATELY** sound the fire alarm by activating the nearest red alarm pull station.
- Call the Fire Department. **Dial 911.** Tell them you are reporting a fire at:

2212 Main Mall, Vancouver, BC

- At your discretion attempt to control the fire with available fire equipment.
- Close doors behind you and leave the building by the nearest safe exit.

DO NOT USE THE ELEVATORS

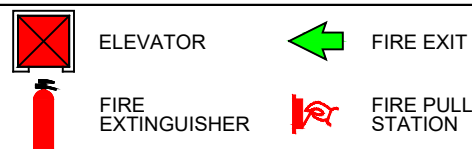
WHEN YOU HEAR THE ALARM:

- Leave the building immediately by the nearest safe exit.
- Close doors behind you.
- **REMAIN CALM.**
- When you have reached the outside, move away from the building.
- Call the Fire Department. **Dial 911.** Tell them you are reporting a fire at:

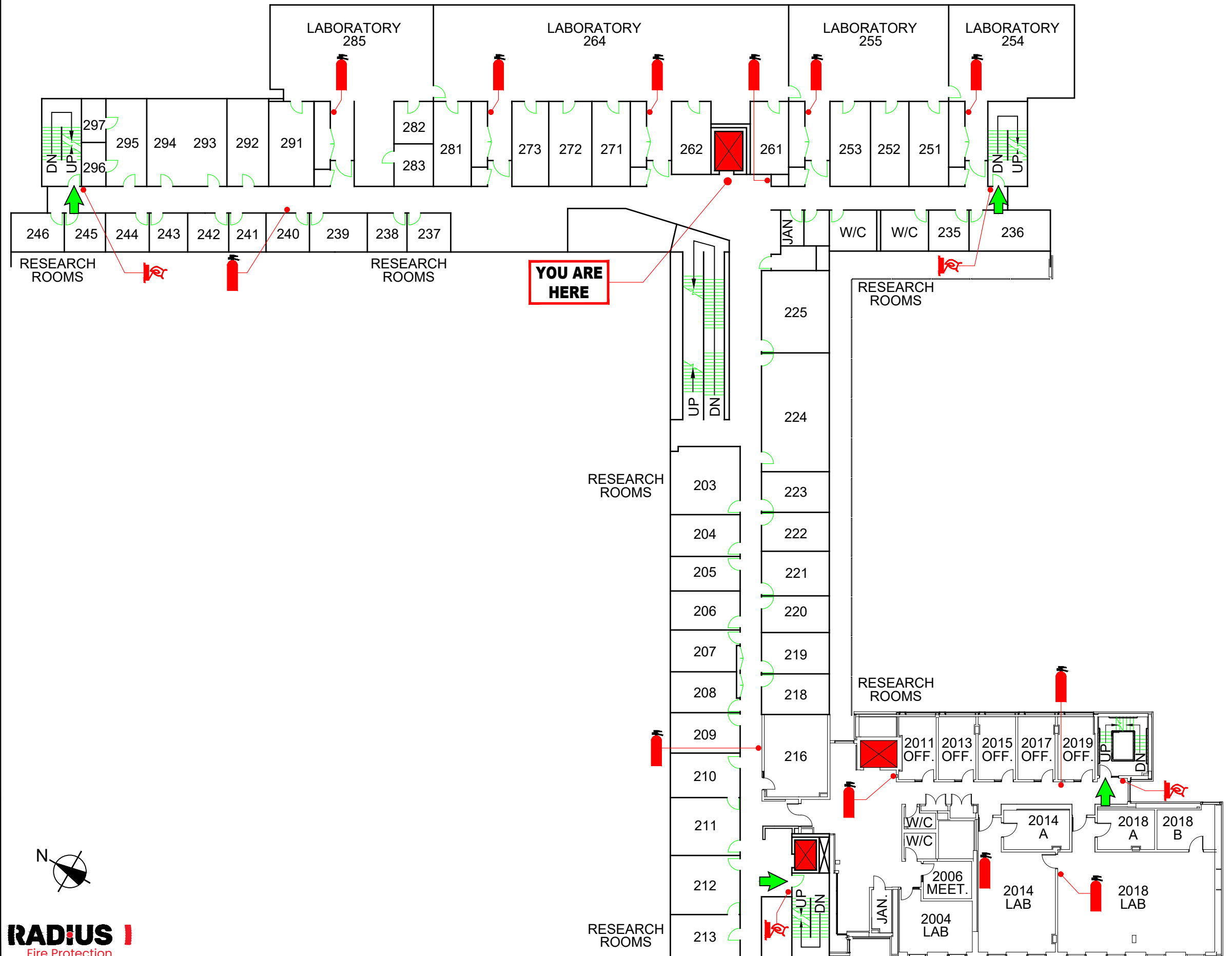
2212 Main Mall, Vancouver, BC

- Go to the designated assembly area.
- **DO NOT GO BACK INTO THE BUILDING FOR ANY REASON.** The Fire Department will advise when it is safe to do so.

LEGEND



THE DESIGNATED ASSEMBLY AREA FOR THIS BUILDING IS:
**West of the building,
adjacent to Main Mall.**



**2212 Main Mall
Vancouver, BC**
Second Floor

**INSTRUCTIONS TO
OCCUPANTS**

IF YOU DISCOVER A FIRE:

- Leave the fire area.
- **IMMEDIATELY** sound the fire alarm by activating the nearest red alarm pull station.
- Call the Fire Department. **Dial 911.** Tell them you are reporting a fire at:

2212 Main Mall, Vancouver, BC

- At your discretion attempt to control the fire with available fire equipment.
- Close doors behind you and leave the building by the nearest safe exit.

DO NOT USE THE ELEVATORS

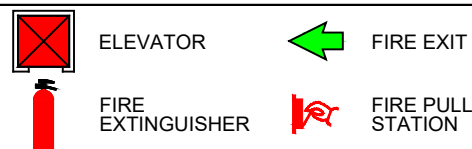
WHEN YOU HEAR THE ALARM:

- Leave the building immediately by the nearest safe exit.
- Close doors behind you.
- **REMAIN CALM.**
- When you have reached the outside, move away from the building.
- Call the Fire Department. **Dial 911.** Tell them you are reporting a fire at:

2212 Main Mall, Vancouver, BC

- Go to the designated assembly area.
- **DO NOT GO BACK INTO THE BUILDING FOR ANY REASON.** The Fire Department will advise when it is safe to do so.

LEGEND



**THE DESIGNATED ASSEMBLY
AREA FOR THIS BUILDING IS:**
*West of the building,
adjacent to Main Mall.*



**2212 Main Mall
Vancouver, BC
Third Floor**

INSTRUCTIONS TO OCCUPANTS

IF YOU DISCOVER A FIRE:

- Leave the fire area.
- **IMMEDIATELY** sound the fire alarm by activating the nearest red alarm pull station.
- Call the Fire Department. **Dial 911.** Tell them you are reporting a fire at:

2212 Main Mall, Vancouver, BC

- At your discretion attempt to control the fire with available fire equipment.
- Close doors behind you and leave the building by the nearest safe exit.

DO NOT USE THE ELEVATORS

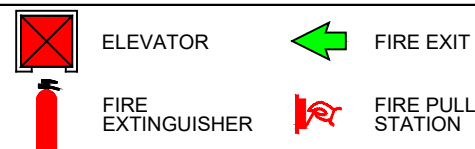
WHEN YOU HEAR THE ALARM:

- Leave the building immediately by the nearest safe exit.
- Close doors behind you.
- **REMAIN CALM.**
- When you have reached the outside, move away from the building.
- Call the Fire Department. **Dial 911.** Tell them you are reporting a fire at:

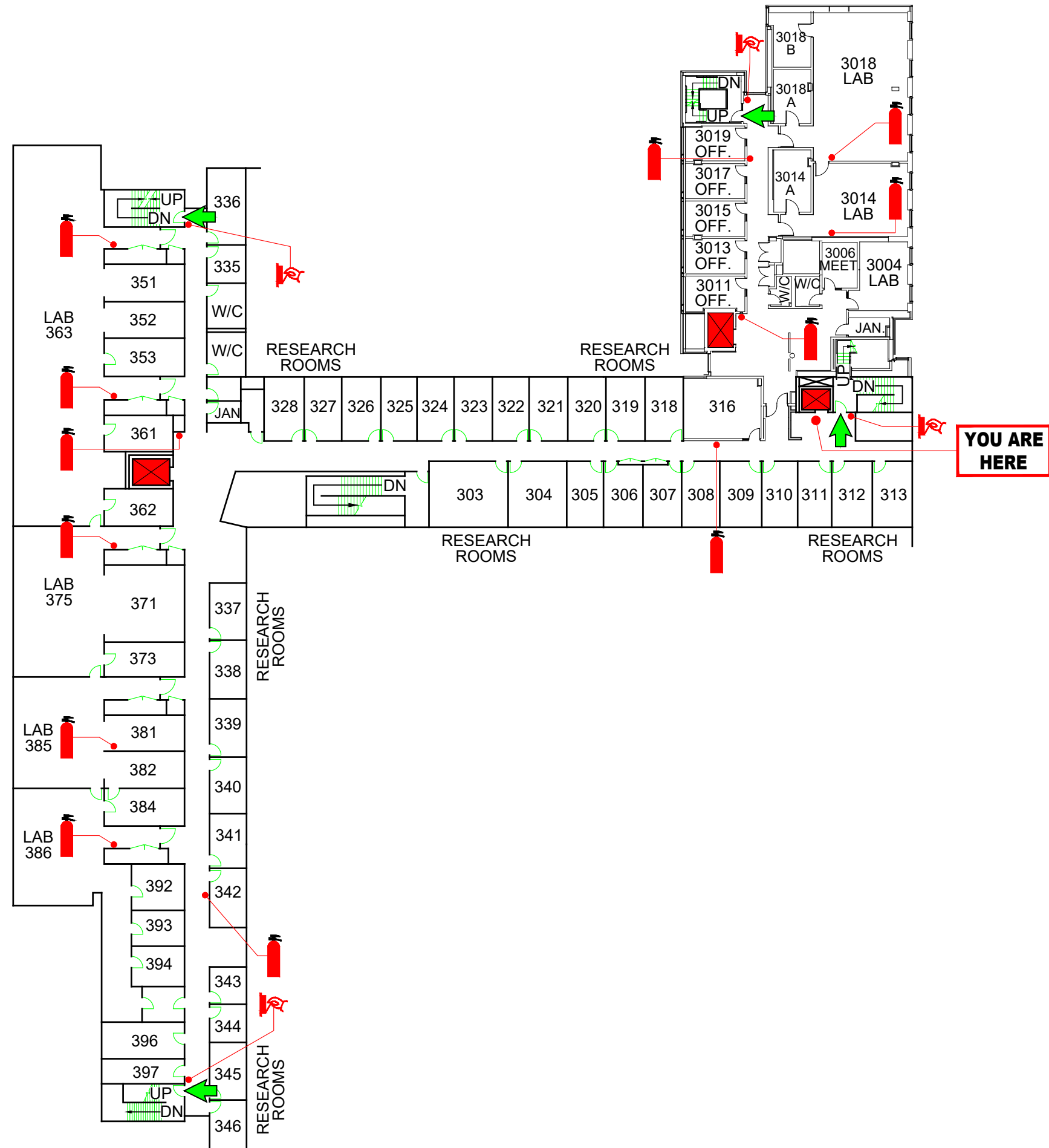
2212 Main Mall, Vancouver, BC

- Go to the designated assembly area.
- **DO NOT GO BACK INTO THE BUILDING FOR ANY REASON.** The Fire Department will advise when it is safe to do so.

LEGEND



THE DESIGNATED ASSEMBLY AREA FOR THIS BUILDING IS:
*West of the building,
adjacent to Main Mall.*



2212 Main Mall

Vancouver, BC

Third Floor

INSTRUCTIONS TO OCCUPANTS

IF YOU DISCOVER A FIRE:

- Leave the fire area.
- **IMMEDIATELY** sound the fire alarm by activating the nearest red alarm pull station.
- Call the Fire Department. **Dial 911.** Tell them you are reporting a fire at:

2212 Main Mall, Vancouver, BC

- At your discretion attempt to control the fire with available fire equipment.
- Close doors behind you and leave the building by the nearest safe exit.

DO NOT USE THE ELEVATORS

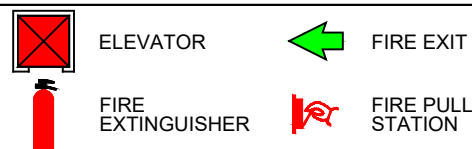
WHEN YOU HEAR THE ALARM:

- Leave the building immediately by the nearest safe exit.
- Close doors behind you.
- **REMAIN CALM.**
- When you have reached the outside, move away from the building.
- Call the Fire Department. **Dial 911.** Tell them you are reporting a fire at:

2212 Main Mall, Vancouver, BC

- Go to the designated assembly area.
- **DO NOT GO BACK INTO THE BUILDING FOR ANY REASON.** The Fire Department will advise when it is safe to do so.

LEGEND



THE DESIGNATED ASSEMBLY AREA FOR THIS BUILDING IS:
*West of the building,
adjacent to Main Mall.*



**2212 Main Mall
Vancouver, BC**

Third Floor

INSTRUCTIONS TO OCCUPANTS

IF YOU DISCOVER A FIRE:

- Leave the fire area.
- **IMMEDIATELY** sound the fire alarm by activating the nearest red alarm pull station.
- Call the Fire Department. **Dial 911.** Tell them you are reporting a fire at:

2212 Main Mall, Vancouver, BC

- At your discretion attempt to control the fire with available fire equipment.
- Close doors behind you and leave the building by the nearest safe exit.

DO NOT USE THE ELEVATORS

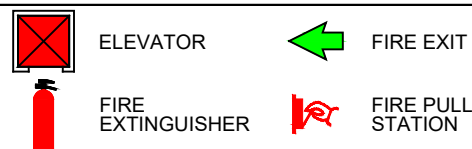
WHEN YOU HEAR THE ALARM:

- Leave the building immediately by the nearest safe exit.
- Close doors behind you.
- **REMAIN CALM.**
- When you have reached the outside, move away from the building.
- Call the Fire Department. **Dial 911.** Tell them you are reporting a fire at:

2212 Main Mall, Vancouver, BC

- Go to the designated assembly area.
- **DO NOT GO BACK INTO THE BUILDING FOR ANY REASON.** The Fire Department will advise when it is safe to do so.

LEGEND



THE DESIGNATED ASSEMBLY AREA FOR THIS BUILDING IS:
*West of the building,
adjacent to Main Mall.*



2212 Main Mall
Vancouver, BC

Fourth Floor

INSTRUCTIONS TO OCCUPANTS

IF YOU DISCOVER A FIRE:

- Leave the fire area.
- **IMMEDIATELY** sound the fire alarm by activating the nearest red alarm pull station.
- Call the Fire Department. **Dial 911.** Tell them you are reporting a fire at:

2212 Main Mall, Vancouver, BC

- At your discretion attempt to control the fire with available fire equipment.
- Close doors behind you and leave the building by the nearest safe exit.

DO NOT USE THE ELEVATORS

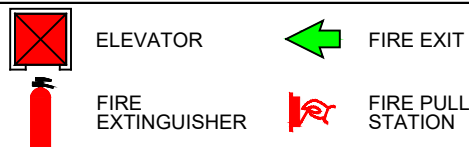
WHEN YOU HEAR THE ALARM:

- Leave the building immediately by the nearest safe exit.
- Close doors behind you.
- **REMAIN CALM.**
- When you have reached the outside, move away from the building.
- Call the Fire Department. **Dial 911.** Tell them you are reporting a fire at:

2212 Main Mall, Vancouver, BC

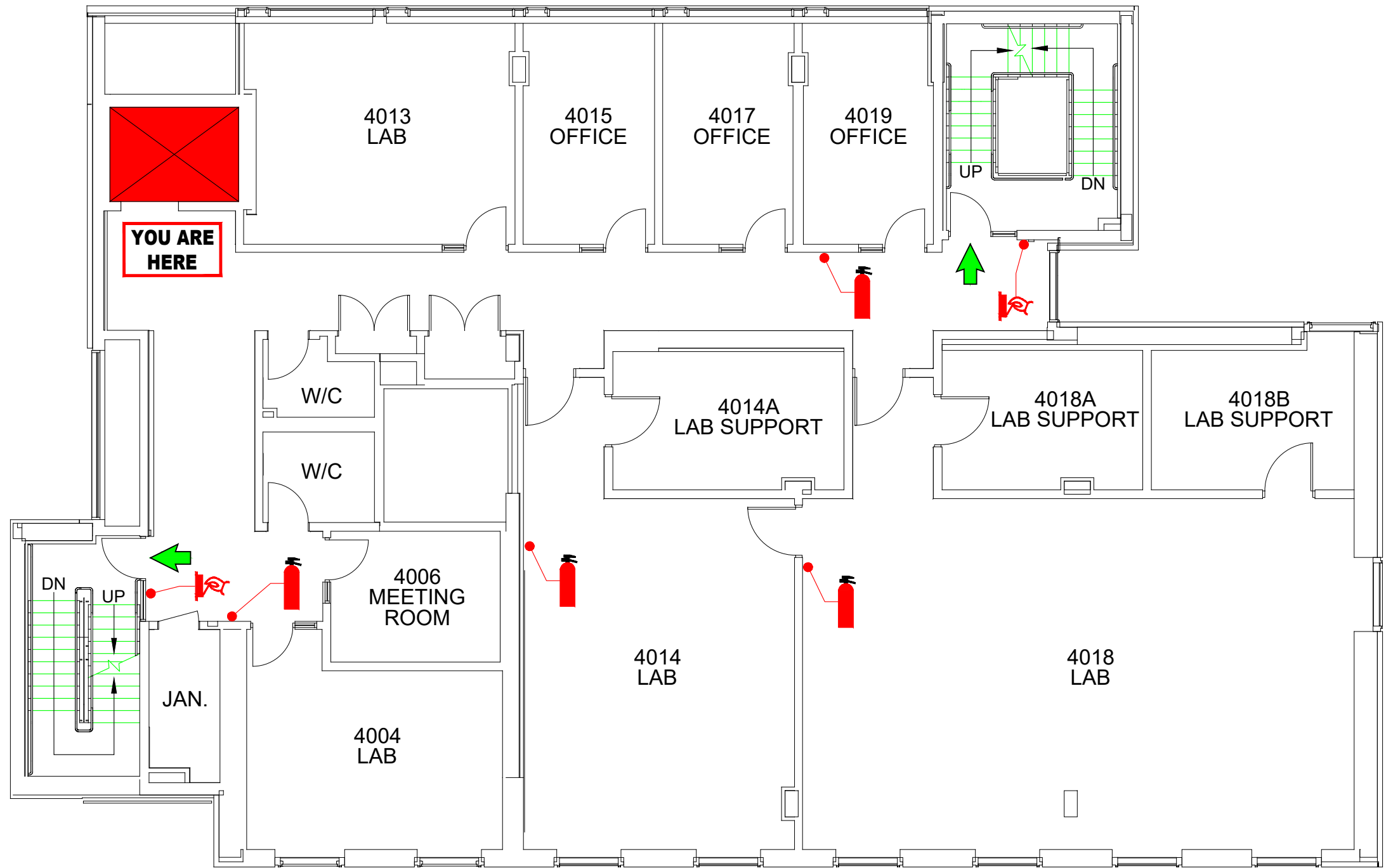
- Go to the designated assembly area.
- **DO NOT GO BACK INTO THE BUILDING FOR ANY REASON.** The Fire Department will advise when it is safe to do so.

LEGEND



THE DESIGNATED ASSEMBLY AREA FOR THIS BUILDING IS:

*West of the building,
adjacent to Main Mall.*



**2212 Main Mall
Vancouver, BC
Fifth Floor**

INSTRUCTIONS TO OCCUPANTS

IF YOU DISCOVER A FIRE:

- Leave the fire area.
- **IMMEDIATELY** sound the fire alarm by activating the nearest red alarm pull station.
- Call the Fire Department. **Dial 911.** Tell them you are reporting a fire at:

2212 Main Mall, Vancouver, BC

- At your discretion attempt to control the fire with available fire equipment.
- Close doors behind you and leave the building by the nearest safe exit.

DO NOT USE THE ELEVATORS

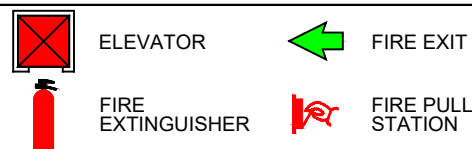
WHEN YOU HEAR THE ALARM:

- Leave the building immediately by the nearest safe exit.
- Close doors behind you.
- **REMAIN CALM.**
- When you have reached the outside, move away from the building.
- Call the Fire Department. **Dial 911.** Tell them you are reporting a fire at:

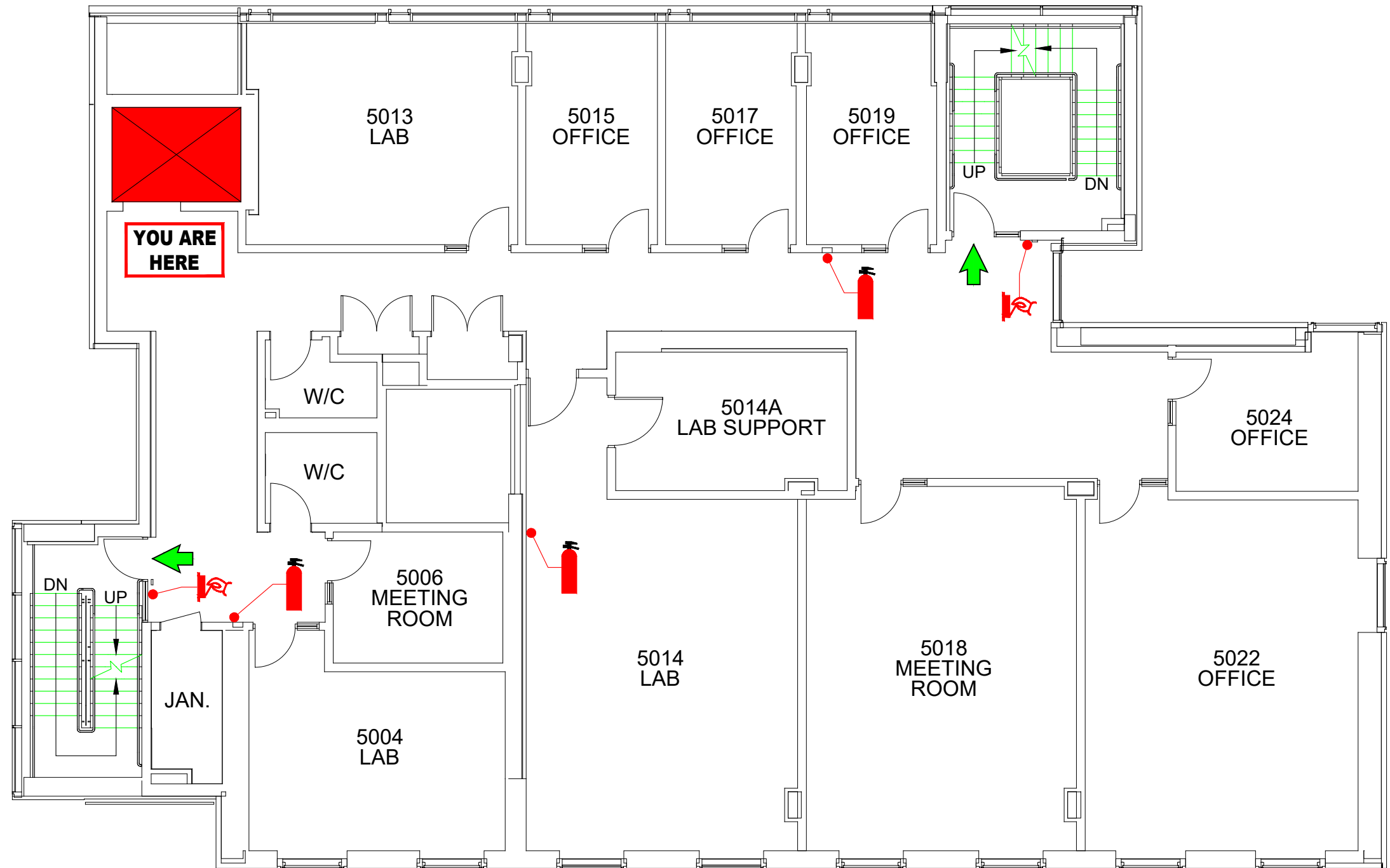
2212 Main Mall, Vancouver, BC

- Go to the designated assembly area.
- **DO NOT GO BACK INTO THE BUILDING FOR ANY REASON.** The Fire Department will advise when it is safe to do so.

LEGEND



THE DESIGNATED ASSEMBLY AREA FOR THIS BUILDING IS:
*West of the building,
adjacent to Main Mall.*



**2212 Main Mall
Vancouver, BC
Sixth Floor**

INSTRUCTIONS TO OCCUPANTS

IF YOU DISCOVER A FIRE:

- Leave the fire area.
- **IMMEDIATELY** sound the fire alarm by activating the nearest red alarm pull station.
- Call the Fire Department. **Dial 911.** Tell them you are reporting a fire at:

2212 Main Mall, Vancouver, BC

- At your discretion attempt to control the fire with available fire equipment.
- Close doors behind you and leave the building by the nearest safe exit.

DO NOT USE THE ELEVATORS

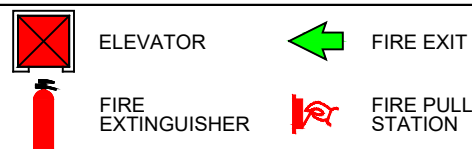
WHEN YOU HEAR THE ALARM:

- Leave the building immediately by the nearest safe exit.
- Close doors behind you.
- **REMAIN CALM.**
- When you have reached the outside, move away from the building.
- Call the Fire Department. **Dial 911.** Tell them you are reporting a fire at:

2212 Main Mall, Vancouver, BC

- Go to the designated assembly area.
- **DO NOT GO BACK INTO THE BUILDING FOR ANY REASON.** The Fire Department will advise when it is safe to do so.

LEGEND



THE DESIGNATED ASSEMBLY AREA FOR THIS BUILDING IS:
*West of the building,
adjacent to Main Mall.*

